

# CERTIFICATE OF LOCATION OF GOVERNMENT CORNER

CENTER \_\_\_\_\_ of Section 29, Township 105, Range 41, 5TH P.M.

STATE OF MINNESOTA, County of MURRAY

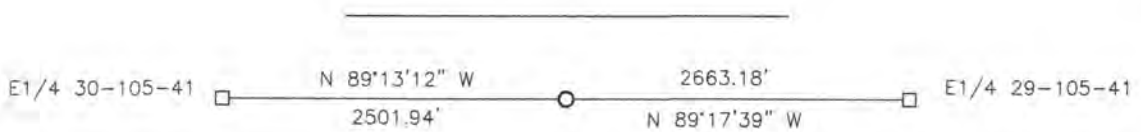
At the corner location shown on the sketch:

On 06-19-2017 found a 3/8" IRON.  
DATE

left monument as found,  lowered monument,  removed monument (explain)

On 07-17-2018 placed a SURVEY SPIKE WITH SEAL #43844.  
DATE

### SKETCH OF REFERENCE TIES



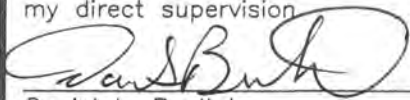
- X
- X
- X
- X

Minnesota State Plane Coordinate  
System Murray County Datum  
NAD83 (1996)

N: 108078.148  
E: 492730.483

Statement of evidence relative to this corner location is on back of page.

I hereby certify that this document and the data contained herein was prepared by me or under my direct supervision



Daniel L. Bueltel

License No. 43844

8/28/18  
DATE

## Statement of Evidence

CENTER 29-105-41

In 1861, Wellman and Smoot did the original subdivision of the township.

On May 20, 1988, the Murray County Highway Department found a 4" wood post 3.5' below the road surface. They set a 3/8" iron at the road surface.

On October 21, 1990, the Murray County Highway Department found a 3/8" iron at the corner.

On September 5, 2012, the Murray County Highway Department found a 3/8" iron at the corner.

On June 19, 2017, Bueltel-Moseng Land Surveying found a 3/8" iron at the corner.

On July 17, 2018, Bueltel-Moseng Land Surveying set a survey spike with seal #43844 at the road surface after construction. It is in the center of the road and in line with the fence to the south.